

## ELEMENT G4

Constant Current Compact – Non dimmable



### Product family features

- Supply voltage: 220...240 V
- Fixed output (no dimming)
- Line frequency: 50 Hz | 60 Hz
- Line voltage: 198...264 V
- According to EN 61347-1, 61347-2-13, 62384
- Line harmonics according to EN 61000-3-2
- Immunity according to EN 61547
- SELV

### Product family benefits

- Versatile scope of application due to output power range of up to 42 W
- Safety ensured by OSRAM (SELV)
- Higher quality of light thanks to < 5% output ripple current
- High efficiency
- High compatibility with COBs and discrete LEDs

### Areas of application

- Spot light and down light
- Panels
- Other Indoor LED luminaries
- Suitable for downlights, spotlights and LED panels
- Suitable for indoor SELV installations



## Product family datasheet

### Technical data

Product description	Electrical data					
	Nominal input voltage	Mains frequency	Input voltage AC	Total harmonic distortion	Power factor $\lambda$	Efficiency in full-load
ELEMENT 6/220...240/150	220...240 V	50/60 Hz	198...264 V	10 % <sup>1)</sup>	0.90	80 % <sup>2)</sup>
ELEMENT 8/220...240/200	220...240 V	50/60 Hz	198...264 V	10 % <sup>1)</sup>	0.90	82 % <sup>2)</sup>
ELEMENT 10/220...240/250	220...240 V	50/60 Hz	198...264 V	10 % <sup>1)</sup>	0.90	84 % <sup>2)</sup>
ELEMENT 12/220...240/300	220...240 V	50/60 Hz	198...264 V	10 % <sup>1)</sup>	0.95	85 % <sup>2)</sup>
ELEMENT 15/220...240/350	220...240 V	50/60 Hz	198...264 V	10 % <sup>1)</sup>	0.95	85 % <sup>2)</sup>
ELEMENT 20/220...240/500	220...240 V	50/60 Hz	198...264 V	10 % <sup>1)</sup>	0.95	87 % <sup>2)</sup>
ELEMENT 25/220...240/600	220...240 V	50/60 Hz	198...264 V	10 % <sup>1)</sup>	0.95	87 % <sup>2)</sup>
ELEMENT 30/220...240/700	220...240 V	50/60 Hz	198...264 V	10 % <sup>1)</sup>	0.95	88 % <sup>2)</sup>
ELEMENT 33/220...240/800	220...240 V	50/60 Hz	198...264 V	10 % <sup>1)</sup>	0.95	88 % <sup>2)</sup>
ELEMENT 35/220...240/900	220...240 V	50/60 Hz	198...264 V	10 % <sup>1)</sup>	0.95	89 % <sup>2)</sup>
ELEMENT 38/220...240/950	220...240 V	50/60 Hz	198...264 V	10 % <sup>1)</sup>	0.95	89 % <sup>2)</sup>
ELEMENT 42/220...240/1050	220...240 V	50/60 Hz	198...264 V	10 % <sup>1)</sup>	0.95	89 % <sup>2)</sup>

Product description	Device power loss	Protective conductor current	Inrush current	Max. ECG no. on circuit breaker 10 A (C)	Max. ECG no. on circuit breaker 10 A (B)	Max. ECG no. on circuit breaker 16 A (B)
ELEMENT 6/220...240/150	1.58 W <sup>3)</sup>	<0.7 mA	8.8 A <sup>4)</sup>	162	108	172
ELEMENT 8/220...240/200	1.84 W <sup>12)</sup>	<0.7 mA	8.5 A <sup>13)</sup>	127	85	136
ELEMENT 10/220...240/250	2.0 W <sup>14)</sup>	<0.7 mA	8.8 A <sup>15)</sup>	107	71	114
ELEMENT 12/220...240/300	2.22 W <sup>16)</sup>	<0.7 mA	8.6 A <sup>13)</sup>	89	59	95
ELEMENT 15/220...240/350	2.59 W <sup>17)</sup>	<0.7 mA	8.8 A <sup>18)</sup>	77	51	83
ELEMENT 20/220...240/500	2.99 W <sup>19)</sup>	<0.7 mA	18 A <sup>20)</sup>	70	42	68
ELEMENT 25/220...240/600	3.59 W <sup>21)</sup>	<0.7 mA	18 A <sup>22)</sup>	84	50	81
ELEMENT 30/220...240/700	3.82 W <sup>23)</sup>	<0.7 mA	< 20 A <sup>24)</sup>	124	75	119
ELEMENT 33/220...240/800	4.36 W <sup>25)</sup>	<0.7 mA	30 A <sup>26)</sup>	46	28	44
ELEMENT 35/220...240/900	4.45 W <sup>27)</sup>	<0.7 mA	30 A <sup>28)</sup>	45	27	43
ELEMENT 38/220...240/950	4.7 W <sup>29)</sup>	<0.7 mA	30 A <sup>30)</sup>	43	26	42
ELEMENT 42/220...240/1050	5.19 W <sup>31)</sup>	<0.7 mA	30 A <sup>32)</sup>	51	31	49

Product description	Max. ECG no. on circuit breaker 16 A (C)	Surge capability (L/N-Ground)	Surge capability (L-N)	Nominal output voltage	U-OUT (working voltage)
ELEMENT 6/220...240/150	259	2 kV <sup>5)</sup>	1 kV	24...42 V	60 V
ELEMENT 8/220...240/200	204	2 kV <sup>5)</sup>	1 kV	24...42 V	60 V
ELEMENT 10/220...240/250	171	2 kV <sup>5)</sup>	1 kV	24...42 V	60 V
ELEMENT 12/220...240/300	143	2 kV <sup>5)</sup>	1 kV	24...42 V	60 V
ELEMENT 15/220...240/350	124	2 kV <sup>5)</sup>	1 kV	24...42 V	60 V

## Product family datasheet

Product description	Max. ECG no. on circuit breaker 16 A (C)	Surge capability (L/N-Ground)	Surge capability (L-N)	Nominal output voltage	U-OUT (working voltage)
ELEMENT 20/220...240/500	113	2 kV <sup>5)</sup>	1 kV	21...40 V	60 V
ELEMENT 25/220...240/600	135	2 kV <sup>5)</sup>	1 kV	21...40 V	60 V
ELEMENT 30/220...240/700	199	2 kV <sup>5)</sup>	1 kV	21...40 V	60 V
ELEMENT 33/220...240/800	74	2 kV <sup>5)</sup>	1 kV	21...40 V	60 V
ELEMENT 35/220...240/900	72	2 kV <sup>5)</sup>	1 kV	21...40 V	60 V
ELEMENT 38/220...240/950	70	2 kV <sup>5)</sup>	1 kV	21...40 V	60 V
ELEMENT 42/220...240/1050	80	2 kV <sup>5)</sup>	1 kV	21...40 V	60 V

Product description	Nominal output current	Output current tolerance	Output ripple current (100 Hz)	Output PSTLM	Output SVM
ELEMENT 6/220...240/150	150 mA	±7.5 %	< 5 %	≤1	≤0.4
ELEMENT 8/220...240/200	200 mA	±7.5 %	< 5 %	≤1	≤0.4
ELEMENT 10/220...240/250	250 mA	±7.5 %	< 5 %	≤1	≤0.4
ELEMENT 12/220...240/300	300 mA	±7.5 %	< 5 %	≤1	≤0.4
ELEMENT 15/220...240/350	350 mA	±7.5 %	< 5 %	≤1	≤0.4
ELEMENT 20/220...240/500	500 mA	±7.5 %	< 5 %	≤1	≤0.4
ELEMENT 25/220...240/600	600 mA	±7.5 %	< 5 %	≤1	≤0.4
ELEMENT 30/220...240/700	700 mA	±7.5 %	< 5 %	≤1	≤0.4
ELEMENT 33/220...240/800	800 mA	±7.5 %	< 5 %	≤1	≤0.4
ELEMENT 35/220...240/900	900 mA	±7.5 %	< 5 %	≤1	≤0.4
ELEMENT 38/220...240/950	950 mA	±7.5 %	< 5 %	≤1	≤0.4
ELEMENT 42/220...240/1050	1050 mA	±7.5 %	< 5 %	≤1	≤0.4

Product description	Nominal output power	Maximum output power	Current set	Input voltage DC	Dimensions & weight
					Mounting hole spacing, length
ELEMENT 6/220...240/150	3.6...6.3 W <sup>6)</sup>	6.3 W	Fixed current	-	80.0 mm
ELEMENT 8/220...240/200	4.8...8.4 W <sup>6)</sup>	8.4 W	Fixed current	-	80.0 mm
ELEMENT 10/220...240/250	6...10.5 W <sup>6)</sup>	10.5 W	Fixed current	-	80.0 mm
ELEMENT 12/220...240/300	7.2...12.6 W <sup>6)</sup>	12.6 W	Fixed current	-	80.0 mm
ELEMENT 15/220...240/350	8.4...14.7 W <sup>6)</sup>	14.7 W	Fixed current	-	80.0 mm
ELEMENT 20/220...240/500	10.5...20 W <sup>6)</sup>	20 W	Fixed current	-	94.0 mm
ELEMENT 25/220...240/600	12.6...24 W <sup>6)</sup>	24 W	Fixed current	-	94.0 mm
ELEMENT 30/220...240/700	14.7...28 W <sup>6)</sup>	28 W	Fixed current	-	94.0 mm
ELEMENT 33/220...240/800	16.8...32 W <sup>6)</sup>	32 W	Fixed current	-	94.0 mm
ELEMENT 35/220...240/900	18.9...36 W <sup>6)</sup>	36 W	Fixed current	-	94.0 mm
ELEMENT 38/220...240/950	20...38 W <sup>6)</sup>	38 W	Fixed current	-	94.0 mm
ELEMENT 42/220...240/1050	22...42 W <sup>6)</sup>	42 W	Fixed current	-	94.0 mm

## Product family datasheet

Product description	Mounting hole spacing, width	Product weight	Cable cross-section, input side	Cable cross-section, output side	Wire preparation length, input side	Wire preparation length, output side
ELEMENT 6/220...240/150	34.0 mm	48.00 g	0.5...1.5 / 0.75...1.5 mm <sup>2</sup> <sup>7)</sup>	0.5...1.5 / 0.75...1.5 mm <sup>2</sup> <sup>7)</sup>	7...8 mm	7...8 mm
ELEMENT 8/220...240/200	34.0 mm	48.00 g	0.5...1.5 / 0.75...1.5 mm <sup>2</sup> <sup>7)</sup>	0.5...1.5 / 0.75...1.5 mm <sup>2</sup> <sup>7)</sup>	7...8 mm	7...8 mm
ELEMENT 10/220...240/250	34.0 mm	52.00 g	0.5...1.5 / 0.75...1.5 mm <sup>2</sup> <sup>7)</sup>	0.5...1.5 / 0.75...1.5 mm <sup>2</sup> <sup>7)</sup>	7...8 mm	7...8 mm
ELEMENT 12/220...240/300	34.0 mm	52.00 g	0.5...1.5 / 0.75...1.5 mm <sup>2</sup> <sup>7)</sup>	0.5...1.5 / 0.75...1.5 mm <sup>2</sup> <sup>7)</sup>	7...8 mm	7...8 mm
ELEMENT 15/220...240/350	34.0 mm	52.00 g	0.5...1.5 / 0.75...1.5 mm <sup>2</sup> <sup>7)</sup>	0.5...1.5 / 0.75...1.5 mm <sup>2</sup> <sup>7)</sup>	7...8 mm	7...8 mm
ELEMENT 20/220...240/500	34.7 mm	74.00 g	0.5...1.5 / 0.75...1.5 mm <sup>2</sup> <sup>7)</sup>	0.5...1.5 / 0.75...1.5 mm <sup>2</sup> <sup>7)</sup>	7...8 mm	7...8 mm
ELEMENT 25/220...240/600	34.7 mm	74.00 g	0.5...1.5 / 0.75...1.5 mm <sup>2</sup> <sup>7)</sup>	0.5...1.5 / 0.75...1.5 mm <sup>2</sup> <sup>7)</sup>	7...8 mm	7...8 mm
ELEMENT 30/220...240/700	34.7 mm	77.00 g	0.5...1.5 / 0.75...1.5 mm <sup>2</sup> <sup>7)</sup>	0.5...1.5 / 0.75...1.5 mm <sup>2</sup> <sup>7)</sup>	7...8 mm	7...8 mm
ELEMENT 33/220...240/800	34.7 mm	89.00 g	0.5...1.5 / 0.75...1.5 mm <sup>2</sup> <sup>7)</sup>	0.5...1.5 / 0.75...1.5 mm <sup>2</sup> <sup>7)</sup>	7...8 mm	7...8 mm
ELEMENT 35/220...240/900	34.7 mm	89.00 g	0.5...1.5 / 0.75...1.5 mm <sup>2</sup> <sup>7)</sup>	0.5...1.5 / 0.75...1.5 mm <sup>2</sup> <sup>7)</sup>	7...8 mm	7...8 mm
ELEMENT 38/220...240/950	34.7 mm	89.00 g	0.5...1.5 / 0.75...1.5 mm <sup>2</sup> <sup>7)</sup>	0.5...1.5 / 0.75...1.5 mm <sup>2</sup> <sup>7)</sup>	7...8 mm	7...8 mm
ELEMENT 42/220...240/1050	34.7 mm	92.00 g	0.5...1.5 / 0.75...1.5 mm <sup>2</sup> <sup>7)</sup>	0.5...1.5 / 0.75...1.5 mm <sup>2</sup> <sup>7)</sup>	7...8 mm	7...8 mm

Product description	Height	Width	Length	Colors & materials	Temperatures & operating conditions
				Casing material	Ambient temperature range
ELEMENT 6/220...240/150	22.0 mm	43.0 mm	90.0 mm	Plastic housing	-20...+50 °C
ELEMENT 8/220...240/200	22.0 mm	43.0 mm	90.0 mm	Plastic housing	-20...+50 °C
ELEMENT 10/220...240/250	22.0 mm	43.0 mm	90.0 mm	Plastic housing	-20...+50 °C

## Product family datasheet

Product description	Height	Width	Length	Colors & materials	Temperatures & operating conditions
				Casing material	Ambient temperature range
ELEMENT 12/220...240/300	22.0 mm	43.0 mm	90.0 mm	Plastic housing	-20...+50 °C
ELEMENT 15/220...240/350	22.0 mm	43.0 mm	90.0 mm	Plastic housing	-20...+50 °C
ELEMENT 20/220...240/500	29.0 mm	43.0 mm	103.0 mm	Plastic housing	-20...+50 °C
ELEMENT 25/220...240/600	29.0 mm	43.0 mm	103.0 mm	Plastic housing	-20...+50 °C
ELEMENT 30/220...240/700	29.0 mm	43.0 mm	103.0 mm	Plastic housing	-20...+50 °C
ELEMENT 33/220...240/800	29.0 mm	43.0 mm	103.0 mm	Plastic housing	-20...+50 °C
ELEMENT 35/220...240/900	29.0 mm	43.0 mm	103.0 mm	Plastic housing	-20...+50 °C
ELEMENT 38/220...240/950	29.0 mm	43.0 mm	103.0 mm	Plastic housing	-20...+45 °C
ELEMENT 42/220...240/1050	29.0 mm	43.0 mm	103.0 mm	Plastic housing	-20...+45 °C

Product description	Maximum temperature at tc test point	Max.housing temperature in case of fault	Temperature range at storage	Permitted rel. humidity during operation	Lifespan
					ECG lifetime
ELEMENT 6/220...240/150	75 °C	110 °C	-40...+85 °C	5...85 % <sup>8)</sup>	30000 / 50000 h <sup>9)</sup>
ELEMENT 8/220...240/200	75 °C	110 °C	-40...+85 °C	5...85 % <sup>8)</sup>	30000 / 50000 h <sup>9)</sup>
ELEMENT 10/220...240/250	75 °C	110 °C	-40...+85 °C	5...85 % <sup>8)</sup>	30000 / 50000 h <sup>9)</sup>
ELEMENT 12/220...240/300	75 °C	110 °C	-40...+85 °C	5...85 % <sup>8)</sup>	30000 / 50000 h <sup>9)</sup>
ELEMENT 15/220...240/350	75 °C	110 °C	-40...+85 °C	5...85 % <sup>8)</sup>	30000 / 50000 h <sup>9)</sup>
ELEMENT 20/220...240/500	75 °C	110 °C	-40...+85 °C	5...85 % <sup>8)</sup>	30000 / 50000 h <sup>9)</sup>
ELEMENT 25/220...240/600	75 °C	110 °C	-40...+85 °C	5...85 % <sup>8)</sup>	30000 / 50000 h <sup>9)</sup>
ELEMENT 30/220...240/700	75 °C	110 °C	-40...+85 °C	5...85 % <sup>8)</sup>	30000 / 50000 h <sup>9)</sup>
ELEMENT 33/220...240/800	75 °C	110 °C	-40...+85 °C	5...85 % <sup>8)</sup>	30000 / 50000 h <sup>9)</sup>
ELEMENT 35/220...240/900	75 °C	110 °C	-40...+85 °C	5...85 % <sup>8)</sup>	30000 / 50000 h <sup>9)</sup>
ELEMENT 38/220...240/950	75 °C	110 °C	-40...+85 °C	5...85 % <sup>8)</sup>	30000 / 50000 h <sup>9)</sup>

## Product family datasheet

Product description	Maximum temperature at tc test point	Max.housing temperature in case of fault	Temperature range at storage	Permitted rel. humidity during operation	Lifespan
					ECG lifetime
ELEMENT 42/220...240/1050	75 °C	110 °C	-40...+85 °C	5...85 % <sup>8)</sup>	30000 / 50000 h <sup>9)</sup>

Product description	Additional product data		Capabilities		
	Encapsulated	Predecessor EAN	Dimmable	Overheating protection	Overload protection
ELEMENT 6/220...240/150	No	4062172167390	No	Electronic switch off	Automatic reversible
ELEMENT 8/220...240/200	No	4062172167413	No	Electronic switch off	Automatic reversible
ELEMENT 10/220...240/250	No	4062172167437	No	Electronic switch off	Automatic reversible
ELEMENT 12/220...240/300	No	4062172167451	No	Electronic switch off	Automatic reversible
ELEMENT 15/220...240/350	No	4062172167475	No	Electronic switch off	Automatic reversible
ELEMENT 20/220...240/500	No	4062172167499	No	Electronic switch off	Automatic reversible
ELEMENT 25/220...240/600	No	4062172167512	No	Electronic switch off	Automatic reversible
ELEMENT 30/220...240/700	No	4062172167536	No	Electronic switch off	Automatic reversible
ELEMENT 33/220...240/800	No	4062172167550	No	Electronic switch off	Automatic reversible
ELEMENT 35/220...240/900	No	4062172167574	No	Electronic switch off	Automatic reversible
ELEMENT 38/220...240/950	No	4062172167598	No	Electronic switch off	Automatic reversible
ELEMENT 42/220...240/1050	No	4062172167611	No	Electronic switch off	Automatic reversible

Product description	Short-circuit protection	No-load proof	Intended for no-load operation	Max. cable length to lamp/LED module
ELEMENT 6/220...240/150	Automatic reversible	Yes	No	2.0 m <sup>10)</sup>
ELEMENT 8/220...240/200	Automatic reversible	Yes	No	2.0 m <sup>10)</sup>
ELEMENT 10/220...240/250	Automatic reversible	Yes	No	2.0 m <sup>10)</sup>
ELEMENT 12/220...240/300	Automatic reversible	Yes	No	2.0 m <sup>10)</sup>
ELEMENT 15/220...240/350	Automatic reversible	Yes	No	2.0 m <sup>10)</sup>
ELEMENT 20/220...240/500	Automatic reversible	Yes	No	2.0 m <sup>10)</sup>

## Product family datasheet

Product description	Short-circuit protection	No-load proof	Intended for no-load operation	Max. cable length to lamp/LED module
ELEMENT 25/220...240/600	Automatic reversible	Yes	No	2.0 m <sup>10)</sup>
ELEMENT 30/220...240/700	Automatic reversible	Yes	No	2.0 m <sup>10)</sup>
ELEMENT 33/220...240/800	Automatic reversible	Yes	No	2.0 m <sup>10)</sup>
ELEMENT 35/220...240/900	Automatic reversible	Yes	No	2.0 m <sup>10)</sup>
ELEMENT 38/220...240/950	Automatic reversible	Yes	No	2.0 m <sup>10)</sup>
ELEMENT 42/220...240/1050	Automatic reversible	Yes	No	2.0 m <sup>10)</sup>

Product description	Suitable for fixtures with prot. class	Type of connection, input side	Type of connection, output side	Number of channels
ELEMENT 6/220...240/150	I / II	Push terminal	Push terminal	1
ELEMENT 8/220...240/200	I / II	Push terminal	Push terminal	1
ELEMENT 10/220...240/250	I / II	Push terminal	Push terminal	1
ELEMENT 12/220...240/300	I / II	Push terminal	Push terminal	1
ELEMENT 15/220...240/350	I / II	Push terminal	Push terminal	1
ELEMENT 20/220...240/500	I / II	Push terminal	Push terminal	1
ELEMENT 25/220...240/600	I / II	Push terminal	Push terminal	1
ELEMENT 30/220...240/700	I / II	Push terminal	Push terminal	1
ELEMENT 33/220...240/800	I / II	Push terminal	Push terminal	1
ELEMENT 35/220...240/900	I / II	Push terminal	Push terminal	1
ELEMENT 38/220...240/950	I / II	Push terminal	Push terminal	1
ELEMENT 42/220...240/1050	I / II	Push terminal	Push terminal	1

Product description	Suitable for through-wiring	Programming		Certificates & standards
		Tuner4TRONIC	Tuner4TRONIC Field App	Approval marks – approval
ELEMENT 6/220...240/150	No	No	No	CE / CCC / RCM / ENEC 25 / UKCA <sup>11)</sup>
ELEMENT 8/220...240/200	No	No	No	CE / CCC / RCM / ENEC 25 / UKCA <sup>11)</sup>
ELEMENT 10/220...240/250	No	No	No	CE / CCC / RCM / ENEC 25 / UKCA <sup>11)</sup>
ELEMENT 12/220...240/300	No	No	No	CE / CCC / RCM / ENEC 25 / UKCA <sup>11)</sup>
ELEMENT 15/220...240/350	No	No	No	CE / CCC / RCM / ENEC 25 / UKCA <sup>11)</sup>
ELEMENT 20/220...240/500	No	No	No	CE / CCC / RCM / ENEC 25 / UKCA <sup>11)</sup>
ELEMENT 25/220...240/600	No	No	No	CE / CCC / RCM / ENEC 25 / UKCA <sup>11)</sup>

## Product family datasheet

Product description	Suitable for through-wiring	Programming		Certificates & standards
		Tuner4TRONIC	Tuner4TRONIC Field App	Approval marks – approval
ELEMENT 30/220...240/700	No	No	No	CE / CCC / RCM / ENEC 25 / UKCA <sup>11)</sup>
ELEMENT 33/220...240/800	No	No	No	CE / CCC / RCM / ENEC 25 / UKCA <sup>11)</sup>
ELEMENT 35/220...240/900	No	No	No	CE / CCC / RCM / ENEC 25 / UKCA <sup>11)</sup>
ELEMENT 38/220...240/950	No	No	No	CE / CCC / RCM / ENEC 25 / UKCA <sup>11)</sup>
ELEMENT 42/220...240/1050	No	No	No	CE / CCC / RCM / ENEC 25 / UKCA <sup>11)</sup>

Product description	Standards	Type of protection	Logistical data	Environmental information according Art. 33 of EU Regulation (EC) 1907/2006 (REACH)
			Commodity code	Date of Declaration
ELEMENT 6/220...240/150	Acc. to IEC 61347-1/Acc. to IEC 61347-2-13/Acc. to IEC 62384/Acc. to IEC 61000-3-2/Acc. to IEC 61547/Acc. to IEC 61000-3-3	IP20	85044083900	08-09-2023
ELEMENT 8/220...240/200	Acc. to IEC 61347-1/Acc. to IEC 61347-2-13/Acc. to IEC 62384/Acc. to IEC 61000-3-2/Acc. to IEC 61547/Acc. to IEC 61000-3-3	IP20	85044083900	08-09-2023
ELEMENT 10/220...240/250	Acc. to IEC 61347-1/Acc. to IEC 61347-2-13/Acc. to IEC 62384/Acc. to IEC 61000-3-2/Acc. to IEC 61547/Acc. to IEC 61000-3-3	IP20	85044083900	08-09-2023
ELEMENT 12/220...240/300	Acc. to IEC 61347-1/Acc. to IEC 61347-2-13/Acc. to IEC 62384/Acc. to IEC 61000-3-2/Acc. to IEC 61547/Acc. to IEC 61000-3-3	IP20	85044083900	08-09-2023



## Product family datasheet

Product description	Standards	Type of protection	Logistical data	Environmental information according Art. 33 of EU Regulation (EC) 1907/2006 (REACH)
			Commodity code	Date of Declaration
ELEMENT 15/220...240/350	Acc. to IEC 61347-1/Acc. to IEC 61347-2-13/Acc. to IEC 62384/Acc. to IEC 61000-3-2/Acc. to IEC 61547/Acc. to IEC 61000-3-3	IP20	85044083900	08-09-2023
ELEMENT 20/220...240/500	Acc. to IEC 61347-1/Acc. to IEC 61347-2-13/Acc. to IEC 62384/Acc. to IEC 61000-3-2/Acc. to IEC 61547/Acc. to IEC 61000-3-3	IP20	85044083900	08-09-2023
ELEMENT 25/220...240/600	Acc. to IEC 61347-1/Acc. to IEC 61347-2-13/Acc. to IEC 62384/Acc. to IEC 61000-3-2/Acc. to IEC 61547/Acc. to IEC 61000-3-3	IP20	85044083900	08-09-2023
ELEMENT 30/220...240/700	Acc. to IEC 61347-1/Acc. to IEC 61347-2-13/Acc. to IEC 62384/Acc. to IEC 61000-3-2/Acc. to IEC 61547/Acc. to IEC 61000-3-3	IP20	85044083900	08-09-2023
ELEMENT 33/220...240/800	Acc. to IEC 61347-1/Acc. to IEC 61347-2-13/Acc. to IEC 62384/Acc. to IEC 61000-3-2/Acc. to IEC 61547/Acc. to IEC 61000-3-3	IP20	85044083900	08-09-2023
ELEMENT 35/220...240/900	Acc. to IEC 61347-1/Acc. to IEC 61347-2-13/Acc. to IEC 62384/Acc. to IEC 61000-3-2/Acc. to IEC 61547/Acc. to IEC 61000-3-3	IP20	85044083900	08-09-2023
ELEMENT 38/220...240/950	Acc. to IEC 61347-1/Acc. to IEC 61347-2-13/Acc. to IEC 62384/Acc. to IEC 61000-3-2/Acc. to IEC 61547/Acc. to IEC 61000-3-3	IP20	85044083900	08-09-2023

## Product family datasheet

Product description	Standards	Type of protection	Logistical data	Environmental information according Art. 33 of EU Regulation (EC) 1907/2006 (RECh)
			Commodity code	Date of Declaration
ELEMENT 42/220...240/1050	Acc. to IEC 61347-1/Acc. to IEC 61347-2-13/Acc. to IEC 62384/Acc. to IEC 61000-3-2/Acc. to IEC 61547/Acc. to IEC 61000-3-3	IP20	85044083900	08-09-2023

Product description	Primary Article Identifier	Declaration No. in SCIP database
ELEMENT 6/220...240/150	4062172355438	In work
ELEMENT 8/220...240/200	4062172355452	In work
ELEMENT 10/220...240/250	4062172355476	In work
ELEMENT 12/220...240/300	4062172355490	In work
ELEMENT 15/220...240/350	4062172355513	In work
ELEMENT 20/220...240/500	4062172355537	In work
ELEMENT 25/220...240/600	4062172355551	In work
ELEMENT 30/220...240/700	4062172355575	In work
ELEMENT 33/220...240/800	4062172355599	In work
ELEMENT 35/220...240/900	4062172355612	In work
ELEMENT 38/220...240/950	4062172355636	In work
ELEMENT 42/220...240/1050	4062172355650	In work

1) At full load

2) at 230 V, 50 Hz

3) At 230 V, Input power 7.88 W max.

4)  $t_{width} = 6.9 \mu s$  typical (measured at 50 %  $I_{peak}$ )

5) L/N – PE acc to EN 61547 Clause 5.7

6) Partial load

7) Build in/ Independent

8) Non-condensing

9) At maximum  $T_c = 75^\circ C$  / 10% failure rate

10) Output wires must be routed as close as possible to each other

11) In preparation

12) At 230 V, Input power 10.24 W max.

13)  $t_{width} = 7.2 \mu s$  typical (measured at 50 %  $I_{peak}$ )

14) At 230 V, Input power 12.5 W max.

15)  $t_{width} = 7 \mu s$  (measured at 50 %  $I_{peak}$ )

16) At 230 V, Input power 14.82 W max.

17) At 230 V, Input power 17.29 W max.

18)  $t_{width} = 6.8 \mu s$  typical (measured at 50 %  $I_{peak}$ )

19) At 230 V, Input power 22.99 W max.

20)  $t_{width} = 112 \mu s$  typical (measured at 50 %  $I_{peak}$ )

## Product family datasheet

21) At 230 V, Input power 27.59 W max.

22)  $t_{\text{width}}$  = 94  $\mu\text{s}$  typical (measured at 50 %  $I_{\text{peak}}$ )

23) At 230 V, Input power 31.82 W max.

24)  $t_{\text{width}}$  = 60  $\mu\text{s}$  typical (measured at 50 %  $I_{\text{peak}}$ )

25) At 230 V, Input power 36.36 W max.

26)  $t_{\text{width}}$  = 102  $\mu\text{s}$  typical (measured at 50 %  $I_{\text{peak}}$ )

27) At 230 V, Input power 40.45 W max.

28)  $t_{\text{width}}$  = 105  $\mu\text{s}$  typical (measured at 50 %  $I_{\text{peak}}$ )

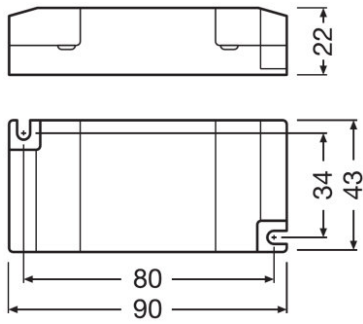
29) At 230 V, Input power 42.7 W max.

30)  $t_{\text{width}}$  = 108  $\mu\text{s}$  typical (measured at 50 %  $I_{\text{peak}}$ )

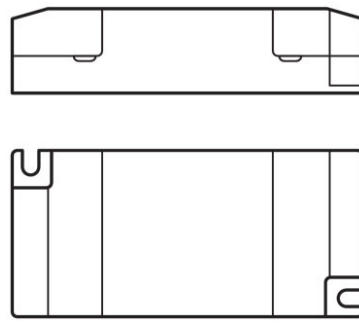
31) At 230 V, Input power 47.19 W max.

32)  $t_{\text{width}}$  = 93  $\mu\text{s}$  typical (measured at 50 %  $I_{\text{peak}}$ )

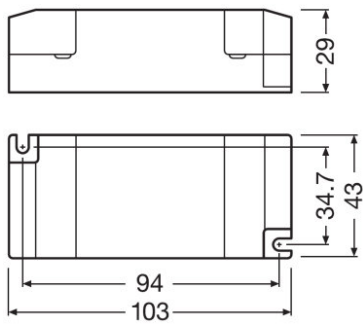
## Product family datasheet



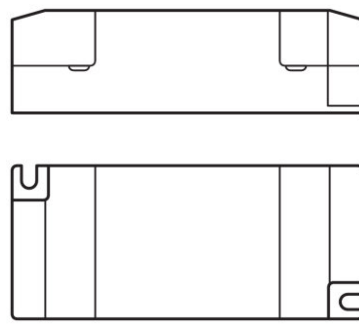
Line drawing of ELEMENT G3



Line drawing of ELEMENT G3



Line drawing of Element G3



Line drawing of Element G3



### Application advice

For more detailed application information and graphics please see product datasheet.


### Sales and Technical Support

Sales and Technical Support [www.osram.com](http://www.osram.com)

### Download Data

File	
	User instruction ELEMENT G4 UI OSRAM address G15120095
	User instruction ELEMENT G4 UI OSRAM address G15120095

## Product family datasheet

	Certificates ELEMENT G4 NSW28114
	Certificates ELEMENT G4 ENEC 64142225031701 CERT U6
	Certificates ELEMENT G4 CB 211 14220734 000
	Certificates ELEMENT G4 CCC 6 15W build in 2023171002004881
	Certificates ELEMENT G4 CCC 20W build in 2023171002004883
	Certificates ELEMENT G4 CCC 25 30W build in 2023171002004872
	Certificates ELEMENT G4 CCC 33 42W build in 2023171002004874

### Ecodesign regulation information:

Intended for use with LED modules.

The forward voltage of the LED light source shall be within the defined operating window of the control gear in all operating conditions including dimming if applicable.

Separate control gear and light sources must be disposed of at certified disposal companies in accordance with Directive 2012/19/EU (WEEE) in the EU and with Waste Electrical and Electronic Equipment (WEEE) Regulations 2013 in the UK. For this purpose, collection points for recycling centres and take-back systems (CRSO) are available from retailers or private disposal companies, which accept separate control gear and light sources free of charge. In this way, raw materials are conserved and materials are recycled.

### Logistical Data

Product code	Product description	Packaging unit (Pieces/Unit)	Dimensions (length x width x height)	Volume	Gross weight
4062172355438	ELEMENT 6/220...240/150	Shipping carton box 50	321 mm x 194 mm x 138 mm	8.59 dm <sup>3</sup>	2673.00 g
4062172355452	ELEMENT 8/220...240/200	Shipping carton box 50	321 mm x 194 mm x 138 mm	8.59 dm <sup>3</sup>	2673.00 g
4062172355476	ELEMENT 10/220...240/250	Shipping carton box 50	321 mm x 194 mm x 138 mm	8.59 dm <sup>3</sup>	2873.00 g
4062172355490	ELEMENT 12/220...240/300	Shipping carton box 50	321 mm x 194 mm x 138 mm	8.59 dm <sup>3</sup>	2873.00 g
4062172355513	ELEMENT 15/220...240/350	Shipping carton box 50	321 mm x 194 mm x 138 mm	8.59 dm <sup>3</sup>	2873.00 g
4062172355537	ELEMENT 20/220...240/500	Shipping carton box 50	306 mm x 221 mm x 173 mm	11.70 dm <sup>3</sup>	4039.00 g

## Product family datasheet

---

### Logistical Data

4062172355551	ELEMENT 25/220...240/600	Shipping carton box 50	306 mm x 221 mm x 173 mm	11.70 dm <sup>3</sup>	4039.00 g
4062172355575	ELEMENT 30/220...240/700	Shipping carton box 50	306 mm x 221 mm x 173 mm	11.70 dm <sup>3</sup>	4189.00 g
4062172355599	ELEMENT 33/220...240/800	Shipping carton box 50	306 mm x 221 mm x 173 mm	11.70 dm <sup>3</sup>	4789.00 g
4062172355612	ELEMENT 35/220...240/900	Shipping carton box 50	306 mm x 221 mm x 173 mm	11.70 dm <sup>3</sup>	4789.00 g
4062172355636	ELEMENT 38/220...240/950	Shipping carton box 50	306 mm x 221 mm x 173 mm	11.70 dm <sup>3</sup>	4789.00 g
4062172355650	ELEMENT 42/220...240/1050	Shipping carton box 50	306 mm x 221 mm x 173 mm	11.70 dm <sup>3</sup>	4939.00 g

The mentioned product code describes the smallest quantity unit which can be ordered. One shipping unit can contain one or more single products. When placing an order, for the quantity please enter single or multiples of a shipping unit.

---

### Disclaimer

Subject to change without notice. Errors and omission excepted. Always make sure to use the most recent release.