

ELEMENT G3

Constant Current Compact – Non dimmable



Product family features

- Fixed output (no dimming)
- Input voltage: 220 – 240 VAC
- Suitable for Class I/II luminaires
- Output current range 150-1050 mA
- Up to 30 000 h lifetime at $t_{cmax} = 80\text{ °C}$
- Typ. Efficiency: from 82% to 90% depend on different wattage
- SELV
- Ambient temp range, t_a : -20 °C to $+50\text{ °C}$

Product family benefits

- Safety ensured by OSRAM (SELV)
- 3 years guarantee
- High quality of light with ripple current $< 5\%$

Areas of application

- Spot light and down light
- Panels
- Other Indoor LED luminaires

Product family datasheet

Technical data

Product description	Electrical data					
	Nominal input voltage	Mains frequency	Input voltage AC	Total harmonic distortion	Power factor λ	Efficiency in full-load
ELEMENT 6/220-240/150 G3	220...240 V	50/60 Hz	198...264 V	< 20 %	0.91C...0.95	81 % ¹⁾
ELEMENT 8/220-240/200 G3	220...240 V	50/60 Hz	198...264 V	< 20 %	0.89C...0.95	83 % ¹⁾
ELEMENT 10/220-240/250 G3	220...240 V	50/60 Hz	198...264 V	< 15 %	0.90C...0.95	85 % ¹⁾
ELEMENT 12/220-240/300 G3	220...240 V	50/60 Hz	198...264 V	< 10 %	0.93C...0.97	86 % ¹⁾
ELEMENT 15/220-240/350 G3	220...240 V	50/60 Hz	198...264 V	< 10 %	0.95...0.97	86 % ¹⁾
ELEMENT 20/220-240/500 G3	220...240 V	50/60 Hz	198...264 V	< 15 %	0.92C...0.97	87 % ¹⁾
ELEMENT 25/220-240/600 G3	220...240 V	50/60 Hz	198...264 V	< 15 %	0.94C...0.97	87 % ¹⁾
ELEMENT 28/220-240/700 G3	220...240 V	50/60 Hz	198...264 V	< 20 %	0.89C...0.96	88 % ¹⁾
ELEMENT 33/220-240/800 G3	220...240 V	50/60 Hz	198...264 V	< 20 %	0.97	88 % ¹⁾
ELEMENT 35/220...240/900 G3	220...240 V	50/60 Hz	198...264 V	< 20 %	0.93C...0.97	89 % ¹⁾
ELEMENT 38/220-240/950 G3	220...240 V	50/60 Hz	198...264 V	< 20 %	0.96	89 % ¹⁾
ELEMENT 42/220-240/1050 G3	220...240 V	50/60 Hz	198...264 V	< 20 %	0.89C...0.97	90 % ¹⁾

Product description	Device power loss	Protective conductor current	Inrush current	Max. ECG no. on circuit breaker 10 A (B)	Max. ECG no. on circuit breaker 10 A (C)	Max. ECG no. on circuit breaker 16 A (B)
ELEMENT 6/220-240/150 G3	1.4 W ²⁾	<0.7 mA	7 A ³⁾	114	171	182
ELEMENT 8/220-240/200 G3	1.7 W ¹⁰⁾	<0.7 mA	< 7.1 A ³⁾	87	130	139
ELEMENT 10/220-240/250 G3	1.8 W ¹¹⁾	<0.7 mA	< 7.1 A ³⁾	72	108	115
ELEMENT 12/220-240/300 G3	2.1 W ¹²⁾	<0.7 mA	< 7.0 A ³⁾	61	92	98
ELEMENT 15/220-240/350 G3	2.4 W ¹³⁾	<0.7 mA	< 7.2 A ³⁾	53	79	85
ELEMENT 20/220-240/500 G3	3.0 W ¹⁴⁾	<0.7 mA	< 9.1 A ³⁾	39	58	62
ELEMENT 25/220-240/600 G3	3.5 W ¹⁵⁾	<0.7 mA	< 9.1 A ³⁾	32	49	52
ELEMENT 28/220-240/700 G3	3.8 W ¹⁶⁾	<0.7 mA	< 9.3 A ³⁾	28	42	45
ELEMENT 33/220-240/800 G3	4.3 W ¹⁷⁾	<0.7 mA	< 9.7 A ³⁾	25	37	39
ELEMENT 35/220...240/900 G3	4.5 W ¹⁸⁾	<0.7 mA	<11.4 A ³⁾	22	33	35
ELEMENT 38/220-240/950 G3	4.7 W ¹⁹⁾	<0.7 mA	< 11 A ³⁾	21	31	33
ELEMENT 42/220-240/1050 G3	4.6 W ²⁰⁾	<0.7 mA	< 11.6 A ³⁾	19	28	30

Product description	Max. ECG no. on circuit breaker 16 A (C)	Max. ECG no. on circuit breaker 25 A (B)	Surge capability (L/N-Ground)	Surge capability (L-N)	Nominal output voltage
ELEMENT 6/220-240/150 G3	274	285	2 kV	1 kV	24...42 V
ELEMENT 8/220-240/200 G3	208	217	2 kV	1 kV	24...42 V
ELEMENT 10/220-240/250 G3	173	180	2 kV	1 kV	24...42 V
ELEMENT 12/220-240/300 G3	147	153	2 kV	1 kV	24...42 V
ELEMENT 15/220-240/350 G3	127	132	2 kV	1 kV	24...42 V

Product family datasheet

Product description	Max. ECG no. on circuit breaker 16 A (C)	Max. ECG no. on circuit breaker 25 A (B)	Surge capability (L/N-Ground)	Surge capability (L-N)	Nominal output voltage
ELEMENT 20/220-240/500 G3	93	97	2 kV	1 kV	21...40 V
ELEMENT 25/220-240/600 G3	78	81	2 kV	1 kV	21...40 V
ELEMENT 28/220-240/700 G3	68	70	2 kV	1 kV	21...40 V
ELEMENT 33/220-240/800 G3	59	62	2 kV	1 kV	21...40 V
ELEMENT 35/220...240/900 G3	52	55	2 kV	1 kV	21...40 V
ELEMENT 38/220-240/950 G3	50	52	2 kV	1 kV	21...40 V
ELEMENT 42/220-240/1050 G3	46	47	2 kV	1 kV	21...40 V

Product description	U-OUT (working voltage)	Nominal output current	Output current tolerance	Output ripple current (100 Hz)	Output PSTLM
ELEMENT 6/220-240/150 G3	60 V	150 mA	±10 %	< 5 %	≤1
ELEMENT 8/220-240/200 G3	60 V	200 mA	±10 %	< 5 %	≤1
ELEMENT 10/220-240/250 G3	60 V	250 mA	±7.5 %	< 5 %	≤1
ELEMENT 12/220-240/300 G3	60 V	300 mA	±7.5 %	< 5 %	≤1
ELEMENT 15/220-240/350 G3	60 V	350 mA	±7.5 %	< 5 %	≤1
ELEMENT 20/220-240/500 G3	60 V	500 mA	±7.5 %	< 5 %	≤1
ELEMENT 25/220-240/600 G3	60 V	600 mA	±7.5 %	< 5 %	≤1
ELEMENT 28/220-240/700 G3	60 V	700 mA	±7.5 %	< 5 %	≤1
ELEMENT 33/220-240/800 G3	60 V	800 mA	±7.5 %	< 5 %	≤1
ELEMENT 35/220...240/900 G3	60 V	900 mA	±7.5 %	< 5 %	≤1
ELEMENT 38/220-240/950 G3	60 V	950 mA	±7.5 %	< 5 %	≤1
ELEMENT 42/220-240/1050 G3	60 V	1050 mA	±7.5 %	< 5 %	≤1

Product description	Output SVM	Nominal output power	Maximum output power	Input voltage DC	Current set
ELEMENT 6/220-240/150 G3	≤0.4	3.6...6.3 W ⁴⁾	6.3 W	-	Fixed current
ELEMENT 8/220-240/200 G3	≤0.4	4.8...8.4 W ⁴⁾	8.4 W	-	Fixed current
ELEMENT 10/220-240/250 G3	≤0.4	6...10.5 W ⁴⁾	10.5 W	-	Fixed current
ELEMENT 12/220-240/300 G3	≤0.4	7.2...12.6 W ⁴⁾	12.6 W	-	Fixed current
ELEMENT 15/220-240/350 G3	≤0.4	8.4...14.7 W ⁴⁾	14.7 W	-	Fixed current
ELEMENT 20/220-240/500 G3	≤0.4	10.5...20 W ⁴⁾	20 W	-	Fixed current
ELEMENT 25/220-240/600 G3	≤0.4	12.6...24 W ⁴⁾	24 W	-	Fixed current
ELEMENT 28/220-240/700 G3	≤0.4	14.7...28 W ⁴⁾	28 W	-	Fixed current

Product family datasheet

Product description	Output SVM	Nominal output power	Maximum output power	Input voltage DC	Current set
ELEMENT 33/220-240/800 G3	≤0.4	16.8...32 W ⁴⁾	32 W	-	Fixed current
ELEMENT 35/220...240/900 G3	≤0.4	18.9...36 W ⁴⁾	36 W	-	Fixed current
ELEMENT 38/220-240/950 G3	≤0.4	20...38 W ⁴⁾	38 W	-	Fixed current
ELEMENT 42/220-240/1050 G3	≤0.4	22...42 W ⁴⁾	42 W	-	Fixed current

Product description	Dimensions & weight				
	Mounting hole spacing, length	Mounting hole spacing, width	Product weight	Cable cross-section, input side	Cable cross-section, output side
ELEMENT 6/220-240/150 G3	80.0 mm	34.0 mm	52.00 g	0.5...1.5 / 0.75...1.5 mm ^{2 5)}	0.5...1.5 / 0.75...1.5 mm ^{2 5)}
ELEMENT 8/220-240/200 G3	80.0 mm	34.0 mm	52.00 g	0.5...1.5 / 0.75...1.5 mm ^{2 5)}	0.5...1.5 / 0.75...1.5 mm ^{2 5)}
ELEMENT 10/220-240/250 G3	80.0 mm	34.0 mm	52.00 g	0.5...1.5 / 0.75...1.5 mm ^{2 5)}	0.5...1.5 / 0.75...1.5 mm ^{2 5)}
ELEMENT 12/220-240/300 G3	80.0 mm	34.0 mm	52.00 g	0.5...1.5 / 0.75...1.5 mm ^{2 5)}	0.5...1.5 / 0.75...1.5 mm ^{2 5)}
ELEMENT 15/220-240/350 G3	80.0 mm	34.0 mm	52.00 g	0.5...1.5 / 0.75...1.5 mm ^{2 5)}	0.5...1.5 / 0.75...1.5 mm ^{2 5)}
ELEMENT 20/220-240/500 G3	94.0 mm	34.7 mm	66.60 g	0.5...1.5 / 0.75...1.5 mm ^{2 5)}	0.5...1.5 / 0.75...1.5 mm ^{2 5)}
ELEMENT 25/220-240/600 G3	94.0 mm	34.7 mm	66.60 g	0.5...1.5 / 0.75...1.5 mm ^{2 5)}	0.5...1.5 / 0.75...1.5 mm ^{2 5)}
ELEMENT 28/220-240/700 G3	94.0 mm	34.7 mm	66.60 g	0.5...1.5 / 0.75...1.5 mm ^{2 5)}	0.5...1.5 / 0.75...1.5 mm ^{2 5)}
ELEMENT 33/220-240/800 G3	94.0 mm	34.7 mm	66.60 g	0.5...1.5 / 0.75...1.5 mm ^{2 5)}	0.5...1.5 / 0.75...1.5 mm ^{2 5)}
ELEMENT 35/220...240/900 G3	94.0 mm	34.7 mm	66.60 g	0.5...1.5 / 0.75...1.5 mm ^{2 5)}	0.5...1.5 / 0.75...1.5 mm ^{2 5)}
ELEMENT 38/220-240/950 G3	94.0 mm	34.7 mm	66.60 g	0.5...1.5 / 0.75...1.5 mm ^{2 5)}	0.5...1.5 / 0.75...1.5 mm ^{2 5)}
ELEMENT 42/220-240/1050 G3	94.0 mm	34.7 mm	66.60 g	0.5...1.5 / 0.75...1.5 mm ^{2 5)}	0.5...1.5 / 0.75...1.5 mm ^{2 5)}

Product family datasheet

Product description	Wire preparation length, input side	Wire preparation length, output side	Length	Height	Width
ELEMENT 6/220-240/150 G3	7...8 mm	7...8 mm	90.0 mm	22.0 mm	43.0 mm
ELEMENT 8/220-240/200 G3	7...8 mm	7...8 mm	90.0 mm	22.0 mm	43.0 mm
ELEMENT 10/220-240/250 G3	7...8 mm	7...8 mm	90.0 mm	22.0 mm	43.0 mm
ELEMENT 12/220-240/300 G3	7...8 mm	7...8 mm	90.0 mm	22.0 mm	43.0 mm
ELEMENT 15/220-240/350 G3	7...8 mm	7...8 mm	90.0 mm	22.0 mm	43.0 mm
ELEMENT 20/220-240/500 G3	7...8 mm	7...8 mm	103.0 mm	29.0 mm	43.0 mm
ELEMENT 25/220-240/600 G3	7...8 mm	7...8 mm	103.0 mm	29.0 mm	43.0 mm
ELEMENT 28/220-240/700 G3	7...8 mm	7...8 mm	103.0 mm	29.0 mm	43.0 mm
ELEMENT 33/220-240/800 G3	7...8 mm	7...8 mm	103.0 mm	29.0 mm	43.0 mm
ELEMENT 35/220...240/900 G3	7...8 mm	7...8 mm	103.0 mm	29.0 mm	43.0 mm
ELEMENT 38/220-240/950 G3	7...8 mm	7...8 mm	103.0 mm	29.0 mm	43.0 mm
ELEMENT 42/220-240/1050 G3	7...8 mm	7...8 mm	103.0 mm	29.0 mm	43.0 mm

Product description	Colors & materials	Temperatures & operating conditions			
	Casing material	Ambient temperature range	Maximum temperature at tc test point	Max.housing temperature in case of fault	Temperature range at storage
ELEMENT 6/220-240/150 G3	Plastic housing	-20...+50 °C	80 °C	110 °C	-40...+85 °C
ELEMENT 8/220-240/200 G3	Plastic housing	-20...+50 °C	80 °C	110 °C	-40...+85 °C
ELEMENT 10/220-240/250 G3	Plastic housing	-20...+50 °C	80 °C	110 °C	-40...+85 °C
ELEMENT 12/220-240/300 G3	Plastic housing	-20...+50 °C	80 °C	110 °C	-40...+85 °C
ELEMENT 15/220-240/350 G3	Plastic housing	-20...+50 °C	80 °C	110 °C	-40...+85 °C
ELEMENT 20/220-240/500 G3	Plastic housing	-20...+50 °C	80 °C	110 °C	-40...+85 °C
ELEMENT 25/220-240/600 G3	Plastic housing	-20...+50 °C	80 °C	110 °C	-40...+85 °C
ELEMENT 28/220-240/700 G3	Plastic housing	-20...+50 °C	80 °C	110 °C	-40...+85 °C
ELEMENT 33/220-240/800 G3	Plastic housing	-20...+50 °C	80 °C	110 °C	-40...+85 °C
ELEMENT 35/220...240/900 G3	Plastic housing	-20...+50 °C	80 °C	110 °C	-40...+85 °C
ELEMENT 38/220-240/950 G3	Plastic housing	-20...+50 °C	80 °C	110 °C	-40...+85 °C
ELEMENT 42/220-240/1050 G3	Plastic housing	-20...+45 °C	80 °C	110 °C	-40...+85 °C

Product family datasheet

Product description	Permitted rel. humidity during operation	Lifespan	Additional product data		Capabilities
		ECG lifetime	Encapsulated	Predecessor EAN	Dimmable
ELEMENT 6/220-240/150 G3	5...85 % ⁶⁾	30000 / 50000 h ⁷⁾	No	4052899552821	No
ELEMENT 8/220-240/200 G3	5...85 % ⁶⁾	30000 / 50000 h ⁷⁾	No	4052899552845	No
ELEMENT 10/220-240/250 G3	5...85 % ⁶⁾	30000 / 50000 h ⁷⁾	No	4052899552869	No
ELEMENT 12/220-240/300 G3	5...85 % ⁶⁾	30000 / 50000 h ⁷⁾	No	4052899552883	No
ELEMENT 15/220-240/350 G3	5...85 % ⁶⁾	30000 / 50000 h ⁷⁾	No	4052899552906	No
ELEMENT 20/220-240/500 G3	5...85 % ⁶⁾	30000 / 50000 h ⁷⁾	No	4052899552920	No
ELEMENT 25/220-240/600 G3	5...85 % ⁶⁾	30000 / 50000 h ⁷⁾	No	4052899552944	No
ELEMENT 28/220-240/700 G3	5...85 % ⁶⁾	30000 / 50000 h ⁷⁾	No	4052899552999	No
ELEMENT 33/220-240/800 G3	5...85 % ⁶⁾	30000 / 50000 h ⁷⁾	No	4052899553019	No
ELEMENT 35/220...240/900 G3	5...85 % ⁶⁾	30000 / 50000 h ⁷⁾	No	4052899553033	No
ELEMENT 38/220-240/950 G3	5...85 % ⁶⁾	30000 / 50000 h ⁷⁾	No		No
ELEMENT 42/220-240/1050 G3	5...85 % ⁶⁾	30000 / 50000 h ⁷⁾	No	4052899553057	No

Product description	Overheating protection	Overload protection	Short-circuit protection	No-load proof
ELEMENT 6/220-240/150 G3	No	Automatic reversible	Automatic reversible	Automatic reversible
ELEMENT 8/220-240/200 G3	No	Automatic reversible	Automatic reversible	Automatic reversible
ELEMENT 10/220-240/250 G3	No	Automatic reversible	Automatic reversible	Automatic reversible
ELEMENT 12/220-240/300 G3	No	Automatic reversible	Automatic reversible	Automatic reversible
ELEMENT 15/220-240/350 G3	No	Automatic reversible	Automatic reversible	Automatic reversible
ELEMENT 20/220-240/500 G3	No	Automatic reversible	Automatic reversible	Automatic reversible
ELEMENT 25/220-240/600 G3	No	Automatic reversible	Automatic reversible	Automatic reversible
ELEMENT 28/220-240/700 G3	No	Automatic reversible	Automatic reversible	Automatic reversible
ELEMENT 33/220-240/800 G3	No	Automatic reversible	Automatic reversible	Automatic reversible
ELEMENT 35/220...240/900 G3	No	Automatic reversible	Automatic reversible	Automatic reversible

Product family datasheet

Product description	Overheating protection	Overload protection	Short-circuit protection	No-load proof
ELEMENT 38/220-240/950 G3	No	Automatic reversible	Automatic reversible	Automatic reversible
ELEMENT 42/220-240/1050 G3	No	Automatic reversible	Automatic reversible	Automatic reversible

Product description	Intended for no-load operation	Max. cable length to lamp/LED module	Suitable for fixtures with prot. class	Type of connection, input side
ELEMENT 6/220-240/150 G3	No	2.0 m ⁸⁾	I / II	Push terminal
ELEMENT 8/220-240/200 G3	No	2.0 m ⁸⁾	I / II	Push terminal
ELEMENT 10/220-240/250 G3	No	2.0 m ⁸⁾	I / II	Push terminal
ELEMENT 12/220-240/300 G3	No	2.0 m ⁸⁾	I / II	Push terminal
ELEMENT 15/220-240/350 G3	No	2.0 m ⁸⁾	I / II	Push terminal
ELEMENT 20/220-240/500 G3	No	2.0 m ⁸⁾	I / II	Push terminal
ELEMENT 25/220-240/600 G3	No	2.0 m ⁸⁾	I / II	Push terminal
ELEMENT 28/220-240/700 G3	No	2.0 m ⁸⁾	I / II	Push terminal
ELEMENT 33/220-240/800 G3	No	2.0 m ⁸⁾	I / II	Push terminal
ELEMENT 35/220...240/900 G3	No	2.0 m ⁸⁾	I / II	Push terminal
ELEMENT 38/220-240/950 G3	No	2.0 m ⁸⁾	I / II	Push terminal
ELEMENT 42/220-240/1050 G3	No	2.0 m ⁸⁾	I / II	Push terminal

Product description	Type of connection, output side	Number of channels	Suitable for through-wiring	Programming
				Tuner4TRONIC
ELEMENT 6/220-240/150 G3	Push terminal	1	No	No
ELEMENT 8/220-240/200 G3	Push terminal	1	No	No
ELEMENT 10/220-240/250 G3	Push terminal	1	No	No
ELEMENT 12/220-240/300 G3	Push terminal	1	No	No
ELEMENT 15/220-240/350 G3	Push terminal	1	No	No
ELEMENT 20/220-240/500 G3	Push terminal	1	No	No
ELEMENT 25/220-240/600 G3	Push terminal	1	No	No
ELEMENT 28/220-240/700 G3	Push terminal	1	No	No
ELEMENT 33/220-240/800 G3	Push terminal	1	No	No
ELEMENT 35/220...240/900 G3	Push terminal	1	No	No
ELEMENT 38/220-240/950 G3	Push terminal	1	No	No
ELEMENT 42/220-240/1050 G3	Push terminal	1	No	No

Product description	Tuner4TRONIC Field App	Certificates & standards		
		Approval marks – approval	Standards	Type of protection
ELEMENT 6/220-240/150 G3	No	CE / CCC / RCM / ENEC 25 ⁹⁾	Acc. to IEC 61347-1/Acc. to IEC 61347-2-13/Acc. to IEC 62384/Acc. to IEC 61000-3-2/Acc. to IEC 61547/Acc. to IEC 61000-3-3	IP20

Product family datasheet

Product description	Tuner4TRONIC Field App	Certificates & standards		
		Approval marks – approval	Standards	Type of protection
ELEMENT 8/220-240/200 G3	No	CE / CCC / RCM / ENEC 25 ⁹⁾	Acc. to IEC 61347-1/Acc. to IEC 61347-2-13/Acc. to IEC 62384/Acc. to IEC 61000-3-2/Acc. to IEC 61547/Acc. to IEC 61000-3-3	IP20
ELEMENT 10/220-240/250 G3	No	CE / CCC / RCM / ENEC 25 ⁹⁾	Acc. to IEC 61347-1/Acc. to IEC 61347-2-13/Acc. to IEC 62384/Acc. to IEC 61000-3-2/Acc. to IEC 61547/Acc. to IEC 61000-3-3	IP20
ELEMENT 12/220-240/300 G3	No	CE / CCC / RCM / ENEC 25 ⁹⁾	Acc. to IEC 61347-1/Acc. to IEC 61347-2-13/Acc. to IEC 62384/Acc. to IEC 61000-3-2/Acc. to IEC 61547/Acc. to IEC 61000-3-3	IP20
ELEMENT 15/220-240/350 G3	No	CE / CCC / RCM / ENEC 25 ⁹⁾	Acc. to IEC 61347-1/Acc. to IEC 61347-2-13/Acc. to IEC 62384/Acc. to IEC 61000-3-2/Acc. to IEC 61547/Acc. to IEC 61000-3-3	IP20
ELEMENT 20/220-240/500 G3	No	CE / CCC / RCM / ENEC 25 ⁹⁾	Acc. to IEC 61347-1/Acc. to IEC 61347-2-13/Acc. to IEC 62384/Acc. to IEC 61000-3-2/Acc. to IEC 61547/Acc. to IEC 61000-3-3	IP20
ELEMENT 25/220-240/600 G3	No	CE / CCC / RCM / ENEC 25 ⁹⁾	Acc. to IEC 61347-1/Acc. to IEC 61347-2-13/Acc. to IEC 62384/Acc. to IEC 61000-3-2/Acc. to IEC 61547/Acc. to IEC 61000-3-3	IP20
ELEMENT 28/220-240/700 G3	No	CE / CCC / RCM / ENEC 25 ⁹⁾	Acc. to IEC 61347-1/Acc. to IEC 61347-2-13/Acc. to IEC 62384/Acc. to IEC 61000-3-2/Acc. to IEC 61547/Acc. to IEC 61000-3-3	IP20
ELEMENT 33/220-240/800 G3	No	CE / CCC / RCM / ENEC 25 ⁹⁾	Acc. to IEC 61347-1/Acc. to IEC 61347-2-13/Acc. to IEC 62384/Acc. to IEC 61000-3-2/Acc. to IEC 61547/Acc. to IEC 61000-3-3	IP20
ELEMENT 35/220...240/900 G3	No	CE / CCC / RCM / ENEC 25 ⁹⁾	Acc. to IEC 61347-1/Acc. to IEC 61347-2-13/Acc. to IEC 62384/Acc. to IEC 61000-3-2/Acc. to IEC 61547/Acc. to IEC 61000-3-3	IP20

Product family datasheet

Product description	Tuner4TRONIC Field App	Certificates & standards		
		Approval marks – approval	Standards	Type of protection
ELEMENT 38/220-240/950 G3	No	CE / CCC / RCM / ENEC 25 ⁹⁾	Acc. to IEC 61347-1/Acc. to IEC 61347-2-13/Acc. to IEC 62384/Acc. to IEC 61000-3-2/Acc. to IEC 61547/Acc. to IEC 61000-3-3	IP20
ELEMENT 42/220-240/1050 G3	No	CE / CCC / RCM / ENEC 25 ⁹⁾	Acc. to IEC 61347-1/Acc. to IEC 61347-2-13/Acc. to IEC 62384/Acc. to IEC 61000-3-2/Acc. to IEC 61547/Acc. to IEC 61000-3-3	IP20

Product description	Protection class	Logistical data		Environmental information Information according Art. 33 of EU Regulation (EC) 1907/2006 (REACH)	
		Commodity code	Date of Declaration	Primary Article Identifier	
ELEMENT 6/220-240/150 G3	I,II	85044083900	13-09-2023	4062172167390	
ELEMENT 8/220-240/200 G3	I,II	85044083900	13-09-2023	4062172167413	
ELEMENT 10/220-240/250 G3	I,II	85044083900	13-09-2023	4062172167437	
ELEMENT 12/220-240/300 G3	I,II	85044083900	13-09-2023	4062172167451	
ELEMENT 15/220-240/350 G3	I,II	85044083900	13-09-2023	4062172167475	
ELEMENT 20/220-240/500 G3	I,II	85044083900	13-09-2023	4062172167499	
ELEMENT 25/220-240/600 G3	I,II	85044083900	13-09-2023	4062172167512	
ELEMENT 28/220-240/700 G3	I,II	85044083900	13-09-2023	4062172167536	
ELEMENT 33/220-240/800 G3	I,II	85044083900	13-09-2023	4062172167550	
ELEMENT 35/220...240/900 G3	I,II	85044083900	13-09-2023	4062172167574	
ELEMENT 38/220-240/950 G3	I,II	85044083900	13-09-2023	4062172167598	
ELEMENT 42/220-240/1050 G3	I,II	85044083900	13-09-2023	4062172167611	

Product description	Candidate List Substance 1	CAS No. of substance 1	Safe Use Instruction	Declaration No. in SCIP database
ELEMENT 6/220-240/150 G3	Lead	7439-92-1	The identification of the Candidate List substance is sufficient to allow safe use of the article.	1855e71e-55c6-4ba0-ae2a-20b7221637f6
ELEMENT 8/220-240/200 G3	Lead	7439-92-1	The identification of the Candidate List substance is sufficient to allow safe use of the article.	41a24659-9ae5-4767-ac80-31ea1e997471

Product family datasheet

Product description	Candidate List Substance 1	CAS No. of substance 1	Safe Use Instruction	Declaration No. in SCIP database
ELEMENT 10/220-240/250 G3	Lead	7439-92-1	The identification of the Candidate List substance is sufficient to allow safe use of the article.	07aaaa40-c9c9-4c34-a9f0-50a4de1f79e3
ELEMENT 12/220-240/300 G3	Lead	7439-92-1	The identification of the Candidate List substance is sufficient to allow safe use of the article.	b1f638b6-26b3-444c-b287-8d54ee2ad0ef
ELEMENT 15/220-240/350 G3	Lead	7439-92-1	The identification of the Candidate List substance is sufficient to allow safe use of the article.	9ac997a5-345a-4140-9f99-0cdb6f877db
ELEMENT 20/220-240/500 G3	Lead	7439-92-1	The identification of the Candidate List substance is sufficient to allow safe use of the article.	5a1bead4-9938-4a89-89cf-9393e29c98f7
ELEMENT 25/220-240/600 G3	Lead	7439-92-1	The identification of the Candidate List substance is sufficient to allow safe use of the article.	bf6c3ee4-f726-41cf-9d0b-993af35ea073
ELEMENT 28/220-240/700 G3	Lead	7439-92-1	The identification of the Candidate List substance is sufficient to allow safe use of the article.	06f73198-5148-48cc-b68d-b887f9fa78a3
ELEMENT 33/220-240/800 G3	Lead	7439-92-1	The identification of the Candidate List substance is sufficient to allow safe use of the article.	eea5cee6-a2ad-4b8d-a074-eadd99457732
ELEMENT 35/220...240/900 G3	Lead	7439-92-1	The identification of the Candidate List substance is sufficient to allow safe use of the article.	01ce7a47-6907-4d21-996a-90bac7983309
ELEMENT 38/220-240/950 G3	Lead	7439-92-1	The identification of the Candidate List substance is sufficient to allow safe use of the article.	0394ab4d-7a1b-4f33-8273-324bbd34b875

Product family datasheet

Product description	Candidate List Substance 1	CAS No. of substance 1	Safe Use Instruction	Declaration No. in SCIP database
ELEMENT 42/220-240/1050 G3	Lead	7439-92-1	The identification of the Candidate List substance is sufficient to allow safe use of the article.	a951e84e-8c46-433c-9b54-ae04a09e462d

1) at 230 V, 50 Hz

2) At 230 V, Input power 7.7 W max.

3) $t_{width} = 100 \mu s$ (measured at 50 % I_{peak})

4) Partial load

5) Solid/ Flexible Leads

6) Non-condensing

7) At maximum $T_c = 80^\circ C$ / 10% failure rate

8) Output wires must be routed as close as possible to each other

9) In preparation

10) At 230 V, Input power 10.1 W max.

11) At 230 V, Input power 12.3 W max.

12) At 230 V, Input power 14.7 W max.

13) At 230 V, Input power 17.1 W max.

14) At 230V, Input power 23 W max.

15) At 230 V, Input power 27.5W max.

16) At 230 V, Input power 31.8W max.

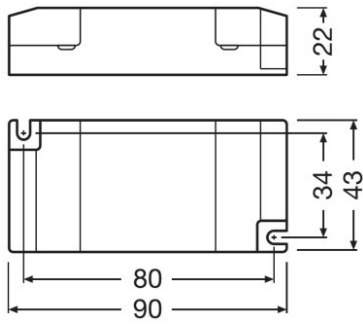
17) At 230 V, Input power 36.3W max.

18) At 230 V, Input power 40.5 W max.

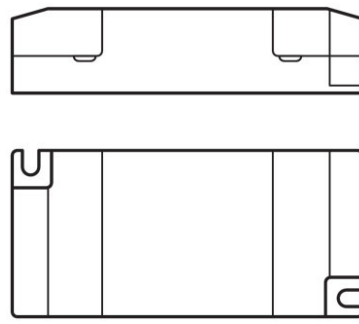
19) At 230 V, Input power 42.7 W max.

20) At 230 V, Input power 46.6 W max.

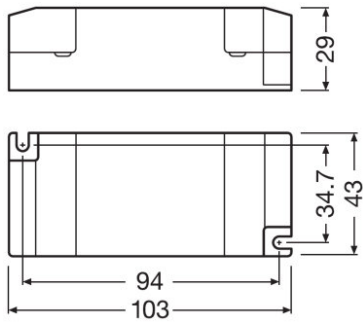
Product family datasheet



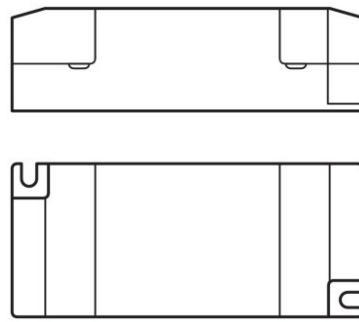
Line drawing of ELEMENT G3



Line drawing of ELEMENT G3



Line drawing of Element G3



Line drawing of Element G3



Application advice

For more detailed application information and graphics please see product datasheet.






Sales and Technical Support

Sales and Technical Support www.osram.com

Download Data

File	
	User instruction ELEMENT LED Power Supply
	User instruction ELEMENT LED Power Supply

Product family datasheet

	Certificates ELEMENT G3 ENEC U6 084117 0084 080621
	Declarations of conformity ELEMENT G3 CE 4232185 161023
	Declarations of conformity ELEMENT G3 UK DoC 4281070 040923
	CAD data ELEMENT 6 15 G3 STEP 250321
	CAD data ELEMENT 20 42 G3 STEP 250321

Ecodesign regulation information:

Intended for use with LED modules.

The forward voltage of the LED light source shall be within the defined operating window of the control gear in all operating conditions including dimming if applicable.

Separate control gear and light sources must be disposed of at certified disposal companies in accordance with Directive 2012/19/EU (WEEE) in the EU and with Waste Electrical and Electronic Equipment (WEEE) Regulations 2013 in the UK. For this purpose, collection points for recycling centres and take-back systems (CRSO) are available from retailers or private disposal companies, which accept separate control gear and light sources free of charge. In this way, raw materials are conserved and materials are recycled.

Logistical Data

Product code	Product description	Packaging unit (Pieces/Unit)	Dimensions (length x width x height)	Volume	Gross weight
4062172167390	ELEMENT 6/220-240/150 G3	Shipping carton box 20	311 mm x 195 mm x 92 mm	5.58 dm ³	1243.00 g
4062172167413	ELEMENT 8/220-240/200 G3	Shipping carton box 20	311 mm x 195 mm x 92 mm	5.58 dm ³	1243.00 g
4062172167437	ELEMENT 10/220-240/250 G3	Shipping carton box 20	311 mm x 195 mm x 92 mm	5.58 dm ³	1243.00 g
4062172167451	ELEMENT 12/220-240/300 G3	Shipping carton box 20	311 mm x 195 mm x 92 mm	5.58 dm ³	1243.00 g
4062172167475	ELEMENT 15/220-240/350 G3	Shipping carton box 20	311 mm x 195 mm x 92 mm	5.58 dm ³	1243.00 g
4062172167499	ELEMENT 20/220-240/500 G3	Shipping carton box 20	311 mm x 224 mm x 104 mm	7.25 dm ³	1578.00 g
4062172167512	ELEMENT 25/220-240/600 G3	Shipping carton box 20	311 mm x 224 mm x 104 mm	7.25 dm ³	1578.00 g
4062172167536	ELEMENT 28/220-240/700 G3	Shipping carton box 20	311 mm x 224 mm x 104 mm	7.25 dm ³	1578.00 g

Product family datasheet

Logistical Data

4062172167550	ELEMENT 33/220-240/800 G3	Shipping carton box 20	311 mm x 224 mm x 104 mm	7.25 dm ³	1578.00 g
4062172167574	ELEMENT 35/220...240/900 G3	Shipping carton box 20	311 mm x 224 mm x 104 mm	7.25 dm ³	1578.00 g
4062172167598	ELEMENT 38/220-240/950 G3	Shipping carton box 20	311 mm x 224 mm x 104 mm	7.25 dm ³	1578.00 g
4062172167611	ELEMENT 42/220-240/1050 G3	Shipping carton box 20	311 mm x 224 mm x 104 mm	7.25 dm ³	1578.00 g

The mentioned product code describes the smallest quantity unit which can be ordered. One shipping unit can contain one or more single products. When placing an order, for the quantity please enter single or multiples of a shipping unit.

Disclaimer

Subject to change without notice. Errors and omission excepted. Always make sure to use the most recent release.